

How to repair or Clear ME Megion in BIOS:

Resolve some issues:

BIOS causes, fans crazy turn, the set was not powered, does not show the problem, the second boot.

BIOS backward system slow, light machine slow and other issues are ME Region is damaged, You can change the corresponding pure version or update new version...etc

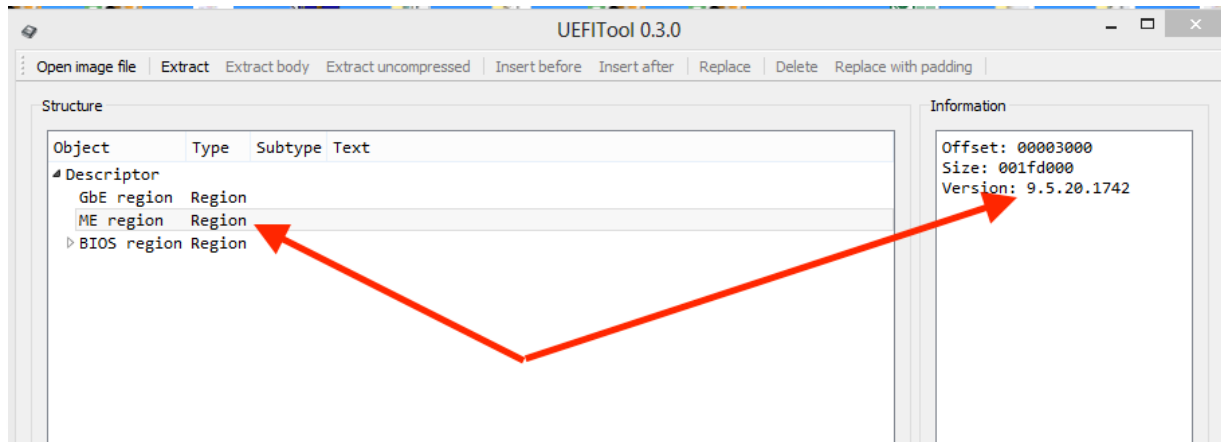
Search location Region ME BIOS (hex 244650) starting position above a line.

The screenshot shows a BIOS memory dump with a 'Find Hex Values' dialog box overlaid. The dialog box is titled 'Find Hex Values' and contains the following text: 'The following hex values will be searched: 244650'. Below this, there are several checkboxes and input fields: 'Use as wildcard: 3F' (unchecked), 'Search: All' (dropdown), 'Cond.: offset mod 512 = 0' (unchecked), 'Search in block only' (unchecked), 'Search in all open windows' (unchecked), and 'List search hits, up to 3 10000' (unchecked). The dialog box has 'OK', 'Cancel', and 'Help' buttons. The memory dump shows hex values and their ASCII representations. A red arrow points to the hex value '244650' in the memory dump.

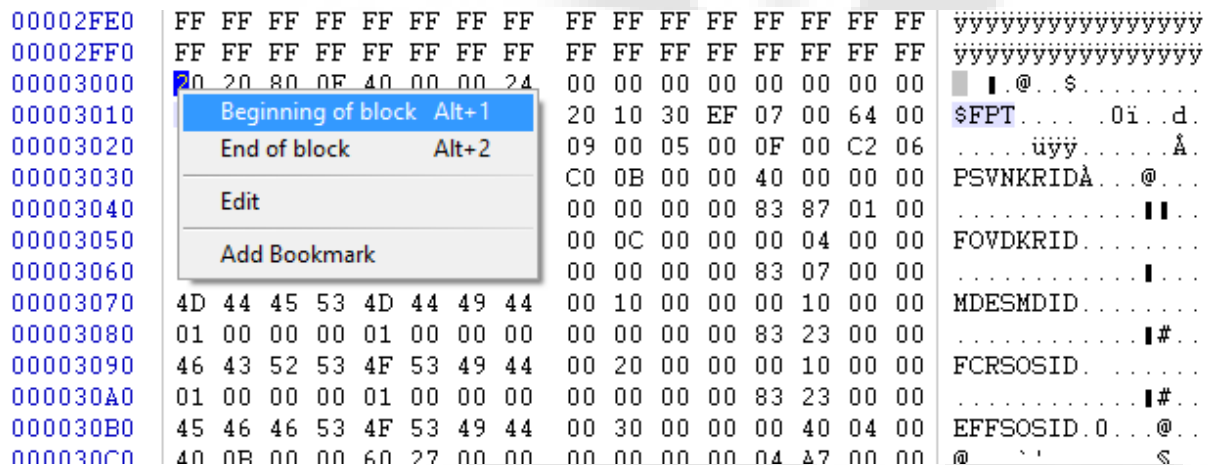
00002F90	FF FF FF FF FF FF FF FF	FF FF FF FF FF FF FF FF	yyyyyyyyyyyyyyyy
00002FA0	FF FF FF FF FF FF FF FF	FF FF FF FF FF FF FF FF	yyyyyyyyyyyyyyyy
00002FB0	FF FF FF FF FF FF FF FF	FF FF FF FF FF FF FF FF	yyyyyyyyyyyyyyyy
00002FC0	FF FF FF FF FF FF FF FF	FF FF FF FF FF FF FF FF	yyyyyyyyyyyyyyyy
00002FD0	FF FF FF FF FF FF FF FF	FF FF FF FF FF FF FF FF	yyyyyyyyyyyyyyyy
00002FE0	FF FF FF FF FF FF FF FF	FF FF FF FF FF FF FF FF	yyyyyyyyyyyyyyyy
00002FF0	FF FF FF FF FF FF FF FF	FF FF FF FF FF FF FF FF	yyyyyyyyyyyyyyyy
00003000	20 20 80 0F 40		!@.\$.....
00003010	24 46 50 54 15		\$FPT....0i..d.
00003020	10 00 00 00 01	üyy.....Å.
00003030	50 53 56 4E 4B		PSVNRKIDÄ...@...
00003040	01 00 00 00 01	
00003050	46 4F 56 44 4B		FOVDKRID.....
00003060	01 00 00 00 01	
00003070	4D 44 45 53 4D		MDESMID.....
00003080	01 00 00 00 01	 #...
00003090	46 43 52 53 4F		FCRSOSID.....
000030A0	01 00 00 00 01	 #...
000030B0	45 46 46 53 4F		EFFSOSID.0...@...
000030C0	40 0B 00 00 60		@...`'.....\$...
000030D0	46 54 50 4D FF		FTPMyyyyyyyyy.±...
000030E0	FF FF FF FF FF		yyyyyyyyyyyyy....
000030F0	4E 56 43 4C FF		NVCLyyyyyyyyyÉi...
00003100	FF FF FF FF FF		yyyyyyyyyyyyy....
00003110	4E 56 43 50 FF		NVCPyyyyyyyyyÅ£...
00003120	FF FF FF FF FF FF FF FF	FF FF FF FF 02 00 00 00	yyyyyyyyyyyyy....
00003130	4E 56 48 4D FF FF FF FF	FF FF FF FF 58 00 00 00	NVHMvvvvvvvvvX...

Identify transcription Region in BIOS

1 .The version ME Region (9.5.20.1742)



2. Search a corresponding version, such as 9.5.20.1742 (<https://www.vinafix.vn/resources/categories/me-region.15/>)
3. Open the corresponding files and the BIOS needs to fix with Winhex.
4. ME Region will select all files (Ctrl+A), then copy (Ctrl+C)
5. Switch to the interface to change the BIOS file search hex: 244650
Above the right line is set to Beginning of block (Alt+1)



Next Ctrl+B, and then saved as new file. use the programmer to write the BIOS chip.

Method or use Flah Images

Tool

Prepare:

Flash Image Tool 9.5.15.1730	10/19/2015 3:05 PM	File folder	
ME Region 9.5.20.1742.bin	10/19/2015 11:00 ...	BIN File	2,036 KB
DELL 3340 - 13229-1-A09.bin	10/13/2015 12:33 ...	BIN File	8,192 KB

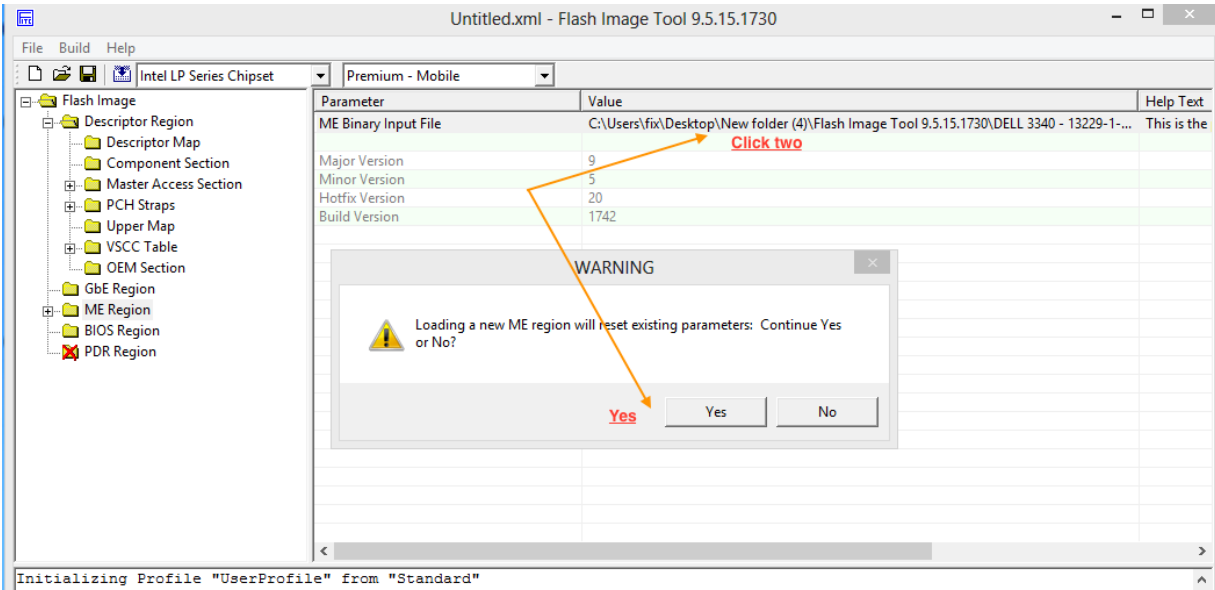
Next

The screenshot shows the Flash Image Tool interface. A file explorer window is open over the tool, showing a folder named 'Flash Image Tool 9.5.15.1730'. Inside this folder, there are two files: 'ME Region 9.5.20.1742.bin' and 'DELL 3340 - 13229-1-A09.bin'. The tool's main window displays a configuration table with the following data:

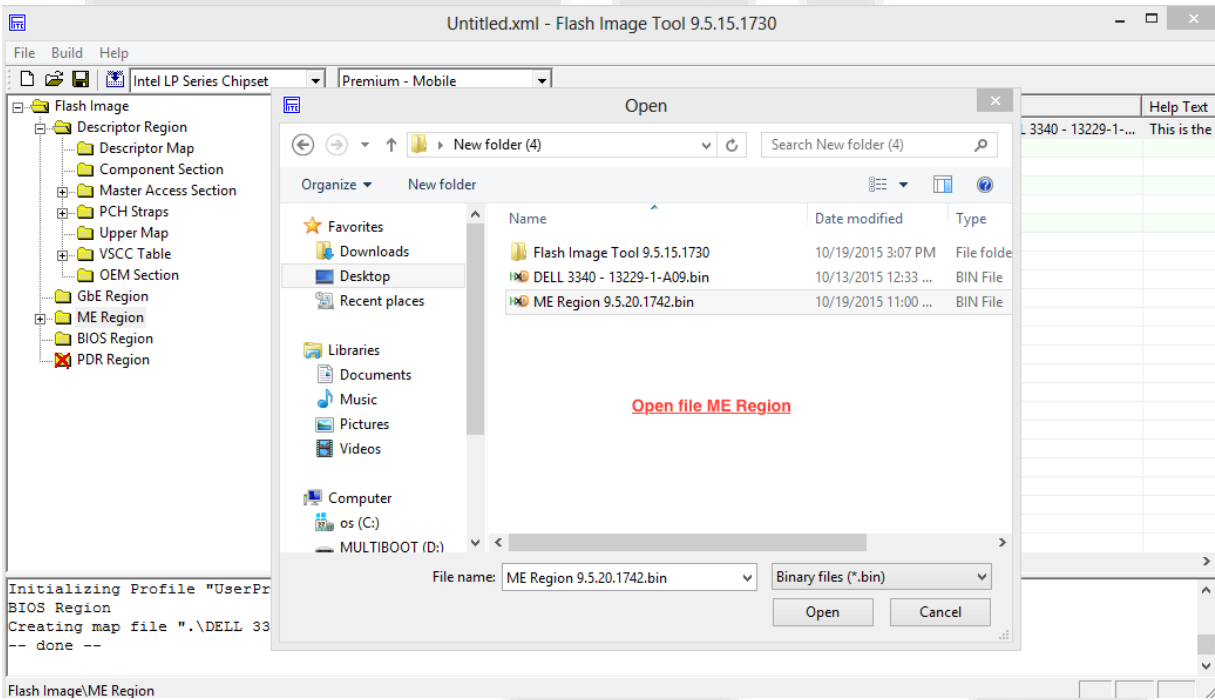
Parameter	Value	Help Text
ME Binary Input File	C:\Users\fix\Desktop\New folder (4)\Flash Image Tool 9.5.15.1730\DELL 3340 - 13229-1-...	This is the
Major Version	9	
Minor Version	5	
Hotfix Version	20	
Build Version	1742	

Red annotations include: 'Open Fitc.exe' pointing to the tool's icon in the file explorer; 'and open BIOS file' pointing to the 'ME Region' folder in the tool's left sidebar; and 'Me Region Version: 9.5.20.1742' pointing to the version values in the table. The status bar at the bottom of the tool shows: 'Initializing Profile "UserProfile" from "Standard"', 'BIOS Region', 'Creating map file ".\DELL 3340 - 13229-1-A09\DELL 3340 - 13229-1-A09.map".', and '-- done --'.

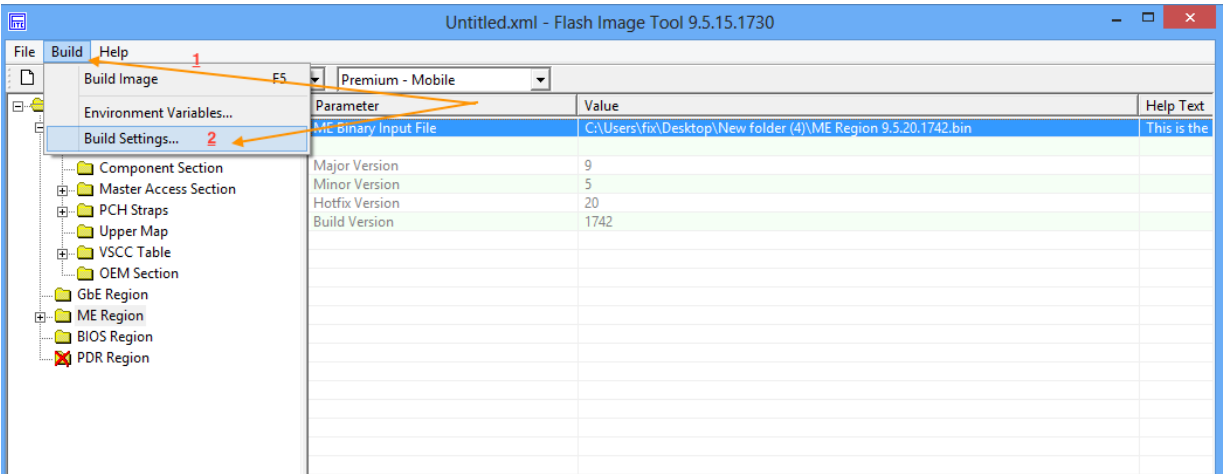
Next



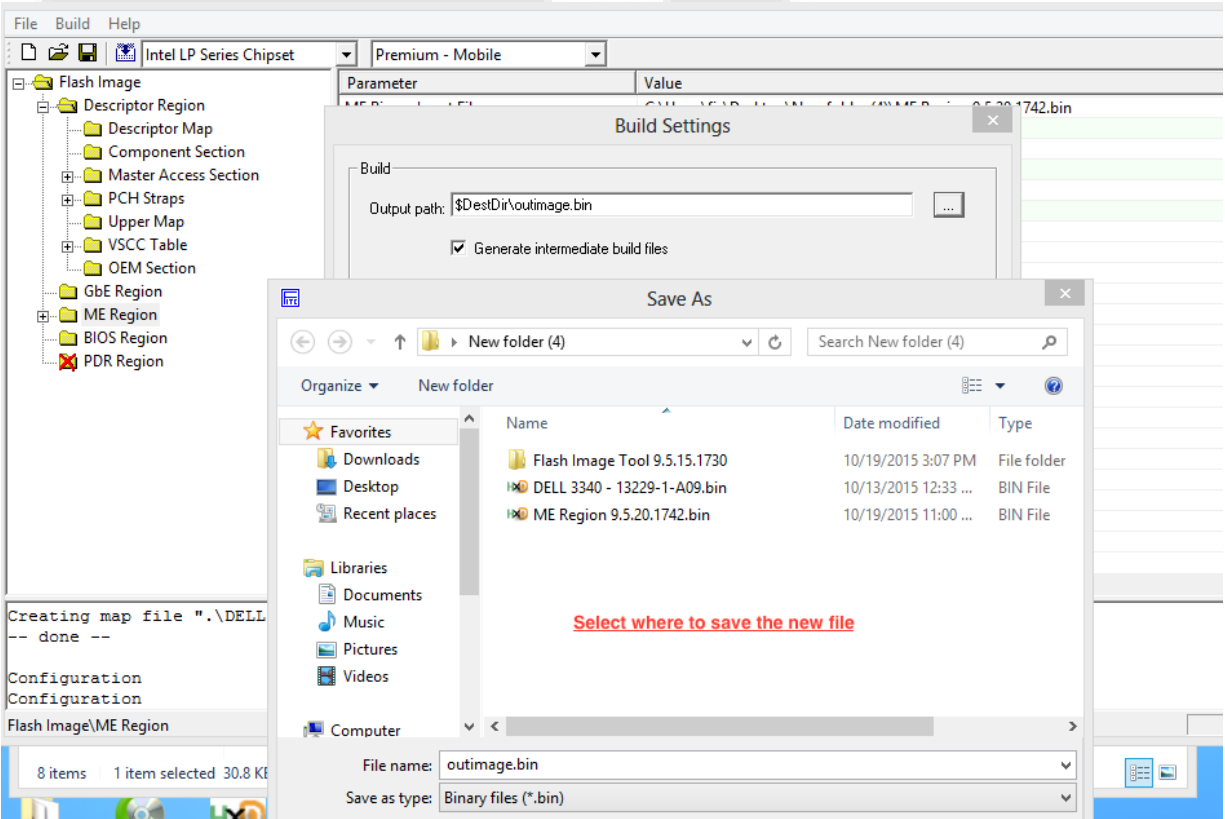
Next



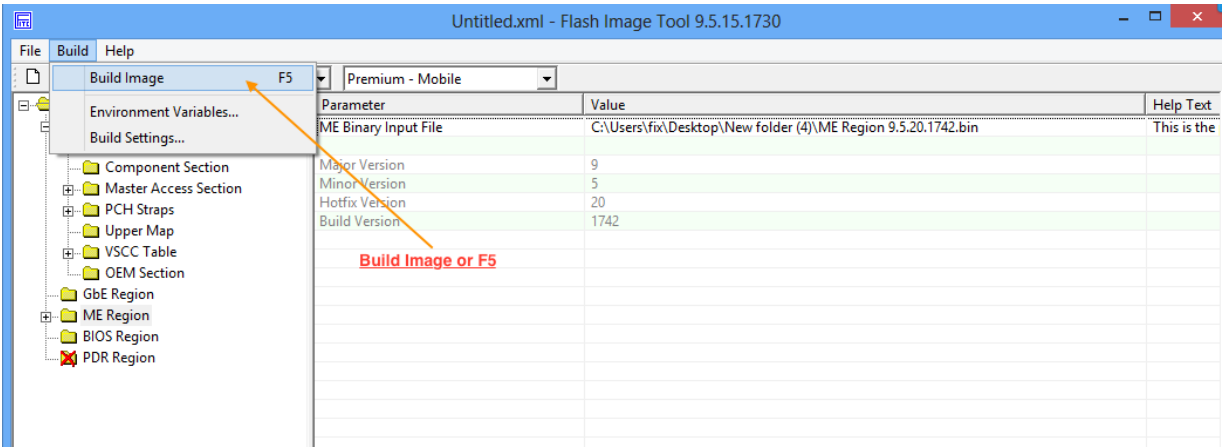
Next



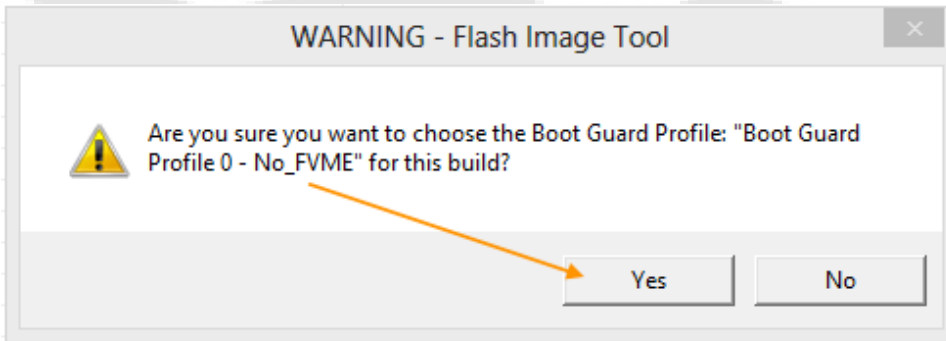
Next



Next














Next



Done!



w folder (4) ▸ Flash Image Tool 9.5.15.1730

Name	Date modified	Type
 DELL 3340 - 13229-1-A09	10/19/2015 3:07 PM	File folder
 v9.5.40.1892	10/19/2015 3:05 PM	File folder
 fitc.exe	9/6/2013 1:07 AM	Application
 fitc.ini	10/19/2015 3:13 PM	Configuration sett..
 fitc.log	10/19/2015 3:13 PM	Text Document
 newfiletmpl.xml	9/6/2013 1:07 AM	XML File
 outimage.bin	10/16/2015 8:48 PM	BIN File
 outimage.map	10/16/2015 8:48 PM	MAP File
 Untitled.xml	10/12/2015 12:42 ...	XML File
 vsccommn.bin	6/28/2013 10:50 PM	BIN File
 VSCCommn_bin Content.pdf	7/17/2013 11:59 PM	PDF-XChange Vie...

Downloads Flash Images & File ME Region:
<https://www.vinafix.vn/resources/categories/me-region.15/>

UEFITool
<https://www.vinafix.vn/resources/uefi-tool.1172/>

Winhex
<https://www.vinafix.vn/resources/winhex.1140/>

Thanks you:
Support via Vinafix.vn